



K-12 PORTFOLIO





Woolpert is passionate about designing educational facilities that excite students about learning. As industry leaders in K-12 facility design, we create flexible and dynamic spaces that fully support today's multiple learning and teaching styles. Our multidisciplinary teams promote 21st-century school design principles such as communication, collaboration, critical thinking and creativity. At the same time, we craft progressive designs that transcend current demands to foster growth and enrichment for decades to come.

We've earned a reputation for providing exceptional professional services to numerous school system clients. The buildings we create can be used as everyday instructional tools—lessons on sustainability, function and community are inherent—and outdoor learning areas provide further opportunity for stimulation and engagement. Aesthetically pleasing and energy efficient, these 21st-century schools are constructed with durable materials and systems that require minimal long-term maintenance and meet the specific needs of the school system.

We are dedicated to providing innovative and appropriate solutions to each client's most challenging design requirements. Through our personal devotion, passion for architecture and technical expertise, we have become the "architect of choice" for an increasing number of returning school clients.

SERVICES

- Architecture
- Building scanning
- Conceptual and detailed design
- Construction documents, administration and observation
- Energy modeling/management
- Facility condition assessment
- Feasibility studies
- Fire safety design
- Interior design
- Landscape architecture
- Lighting design
- Master planning
- Mechanical, electrical and plumbing (MEP) engineering
- Permitting
- Programming
- Resilience planning
- Site/civil design
- Structural engineering
- Surveying
- Sustainable design
- Unmanned aircraft systems (UAS)
- Utility master planning



BARKLEY ELEMENTARY SCHOOL

Norfolk District, U.S. Army Corps of Engineers
Fort Campbell, KY

- \$38M new build
- 142,000-square-foot, 21st-century educational facility
- LEED® Silver
- Chief of Engineers Award of Excellence (Honor Award)
- USACE Building the Future Award (Sustainable Award Category)
- *Learning by Design* Outstanding Project Award
- American School and University Citation Award





DELALIO ELEMENTARY SCHOOL

Naval Facilities Engineering Command Mid-Atlantic
Marine Corps Air Station New River, NC

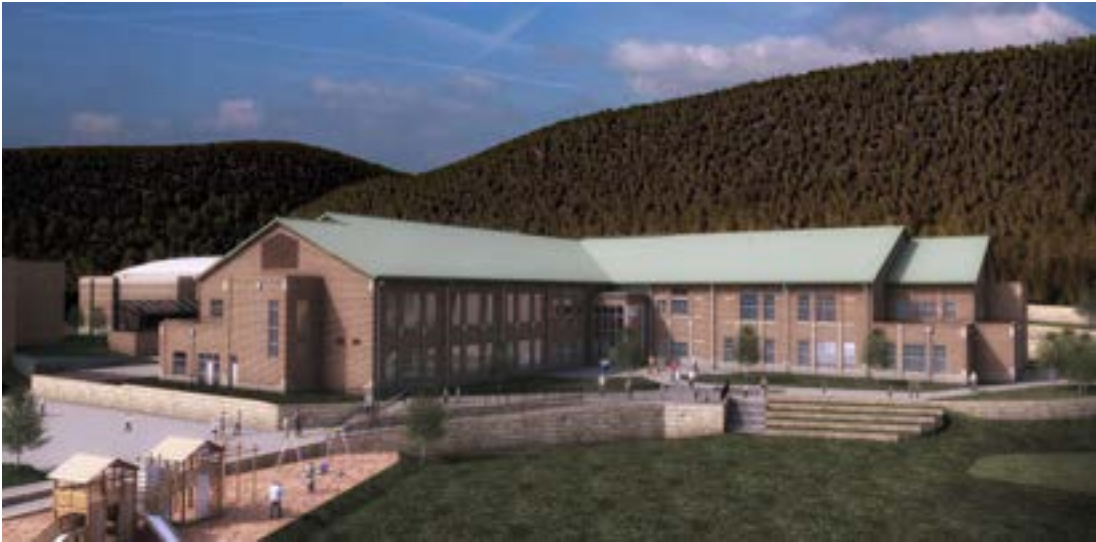
- \$23M new build
- 21st-century educational facility
- Sustainable design
- 66,000-square-foot facility
- LEED® Silver



WEST POINT ELEMENTARY SCHOOL

Norfolk District, U.S. Army Corps of Engineers
West Point, NY

- \$48.8M new build
- 95,500-square-foot, 21st-century educational facility
- LEED® Silver
- Learning neighborhoods



WEST POINT MIDDLE SCHOOL

Norfolk District, U.S. Army Corps of Engineers
West Point, NY

- \$24M addition and renovation
- 76,000-square-foot renovation and addition
- 21st-century educational facility
- Complex site in a historic district with steep grading





GREAT BRIDGE PRIMARY SCHOOL

Chesapeake Public Schools
Chesapeake, VA

- \$18.3M new primary school
- 90,808-square-foot, 21st-century educational facility
- Learning neighborhoods
- Designed to accommodate future additions
- Sustainable design



CAMP ALLEN ELEMENTARY SCHOOL

Norfolk Public Schools
Norfolk, VA

- \$27.5M new building
- 97,492-square-foot, 21st-century educational facility
- LEED® Silver
- Associated parking and athletic areas
- Meets Department of Defense anti-terrorism/force protection standards



ALTON HIGH SCHOOL AND MIDDLE SCHOOL

Alton Community School District 11
Alton, IL

- \$59M renovation/major addition
- 377,000-square-foot new high school on a 95-acre campus
- Existing high school converted into middle school with a 14,200-square-foot gymnasium addition
- Sustainable design included the reuse of existing properties





GREAT NECK MIDDLE SCHOOL

Virginia Beach City Public Schools
Virginia Beach, VA

- \$36M new building
- 223,600-square-foot facility
- LEED® Gold
- Sustainable design concepts
- 2012 Virginia Beach Planning Commission Honor Award in Recognition of Creative and Innovative Design Solutions in Sustainable Development
- 2009 Significant Achievement, Virginia Beach Stewardship Development Award





FORT KNOX MIDDLE AND HIGH SCHOOL

Louisville District, U.S. Army Corps of Engineers
Fort Knox, KY

- \$20M renovation and addition
- 156,727-square-foot
- 21st-century educational facility
- Maximized daylighting with new courtyard
- LEED® Silver



ALBERT CASSENS AND GOSHEN ELEMENTARY SCHOOLS

Edwardsville Community School District No. 7
Edwardsville, IL

- Fast-tracked construction with separate site, foundation and building packages
- Part of an overall \$60M package that included three renovations at other facilities
- Sustainable design included energy-efficient building operations and maximized natural daylighting
- Integrated security features



JAMES BLAIR MIDDLE SCHOOL

Williamsburg-James City County Public Schools
Williamsburg, VA

- \$22M new building
- 110,871-square-foot, 21st-century educational facility
- Learning neighborhoods
- Designed for future additions and ultimate capacity







WOLF BRANCH MIDDLE SCHOOL

Wolf Branch School District 113
Swansea, IL

- \$15.6M new building
- 113,000-square-foot facility



KADENA ELEMENTARY SCHOOL

Japan District, U.S. Army Corps of Engineers
Kadena Air Force Base, Japan

- \$72M new building
- 140,582-square-foot, 21st-century educational facility
- LEED® Silver





CROSSROADS ELEMENTARY SCHOOL

Louisville District, U.S. Army Corps of Engineers
Marine Corps Base, Quantico, VA

- \$43.5M new building to replace three existing elementary schools
- 129,000-square-foot, 21st-century educational facility
- LEED® Silver
- Sustainable design





SOUTHSIDE STEM ACADEMY AT CAMPOSTELLA

City of Norfolk
Norfolk, VA

- \$29.8M new building
- 181,500-square-foot facility
- Sustainable design
- Daylighting
- Solar preheating of hot water
- Energy-efficient HVAC system

BELLEVILLE TOWNSHIP HIGH SCHOOL EAST

Belleville Township High School District 201
Belleville, IL

- \$11.5M renovation and addition
- 11,000-square-foot facility
- Technology, science and athletic spaces



BELLEVILLE TOWNSHIP HIGH SCHOOL WEST

Belleville Township High School District 201
Belleville, IL

- \$55M new building
- 360,000-square-foot educational facility
- Technology, science and athletic spaces





**WALLER
TODD &
SADLER**
A WOOLPERT COMPANY

woolpert.com
wtsarch.com
800.414.1045

